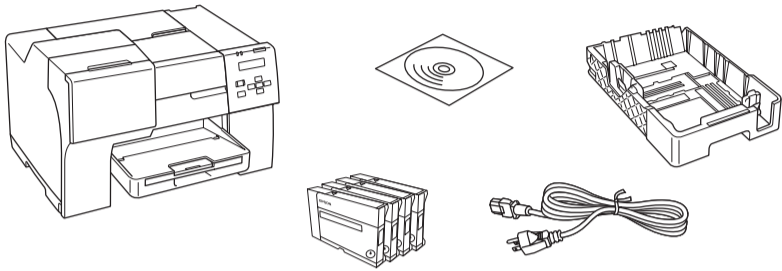


Start Here

B-310N/B-510DN

Before using the printer, make sure you read the safety instructions in the *User's Guide* on your printer CD.

1 Unpack

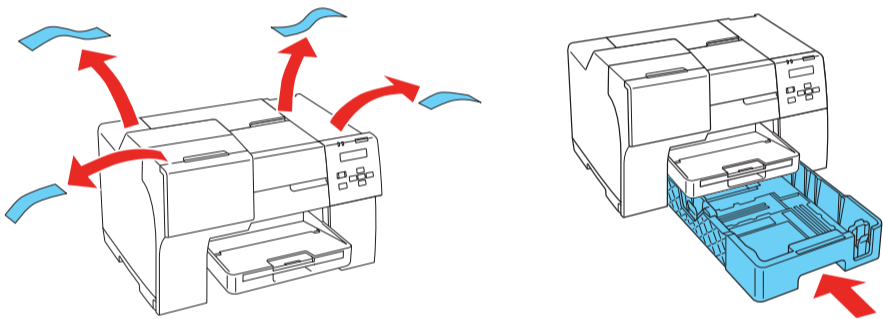


If anything is missing, contact Epson as described on the back of this sheet.

The following instructions apply to both the B-310N and B-510DN, unless otherwise noted.

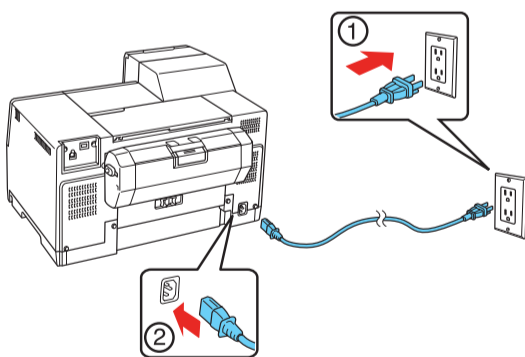
Note: The appearance of your printer may differ from what you see here, depending on your model and accessories installed.

Remove all the tape and other packing material, including tape on the duplexer at the back of the printer. Insert the paper cassette into the printer.



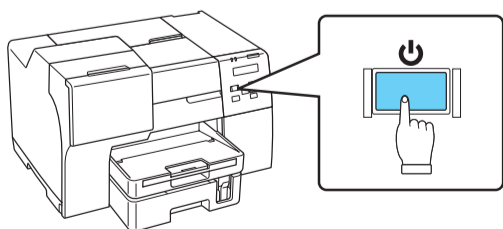
2 Turn on the printer

- 1 Connect the power cable.



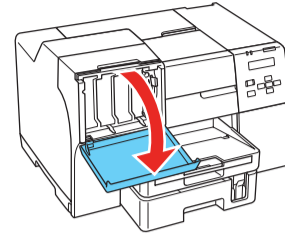
Note: Do not connect to the computer at this time.

- 2 Press the  button.

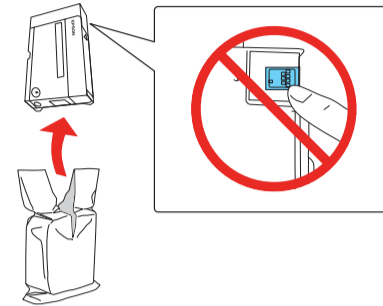


3 Install cartridges

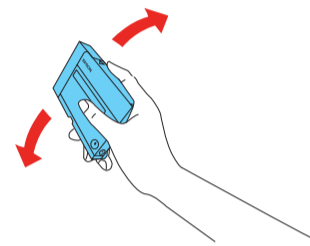
- 1 Open the cartridge cover.



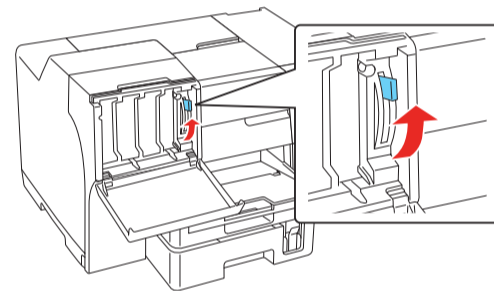
- 2 Unpack the 4 ink cartridges.



- 3 Shake each cartridge for about 5 seconds.

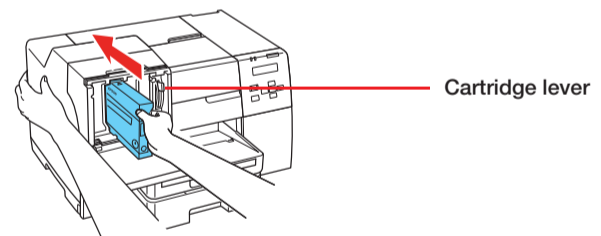


- 4 Make sure the cartridge lever is all the way up, then install each cartridge in the correct slot for its color.

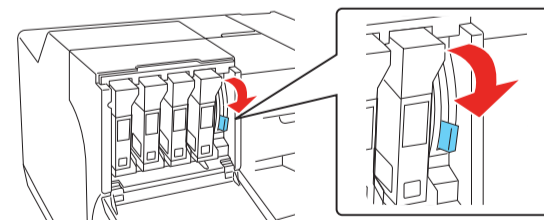


The arrow mark should be on top and pointing toward the printer.

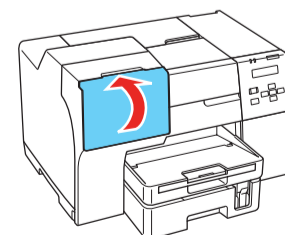
Push each cartridge in until it clicks.



- 5 After you install all 4 cartridges, lower the cartridge lever to the locked position.



- 6 Close the cartridge cover.



The printer starts charging the ink. This takes about 5 minutes.

Caution: Don't turn off the printer or open any covers while it is charging or you'll waste ink.

Note: The printer ships with full cartridges and part of the ink from this first set of cartridges is used for charging the printer.

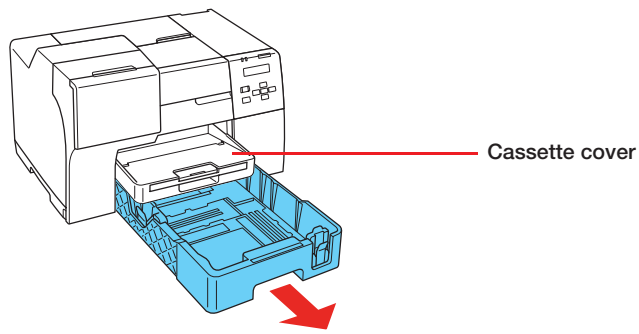


411826000

EPSON
EXCEED YOUR VISION

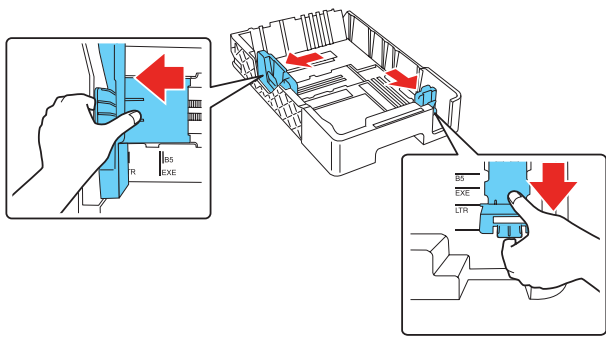
4 Load paper in the cassette

- 1 Pull out the front paper cassette. Make sure you don't pull out the cassette cover.

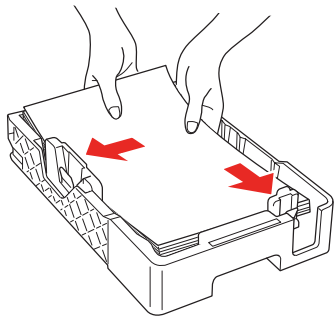


Note: If you are using the legal-size paper cassette (optional with the B-310N), flip open the front of the paper tray.

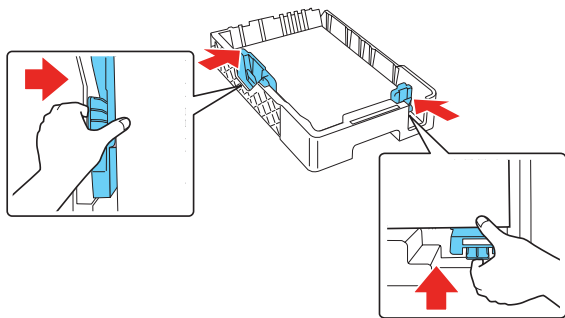
- 2 Squeeze the edge guides and slide them out.



- 3 Load paper with the printable side down (up to 500 sheets of plain paper).

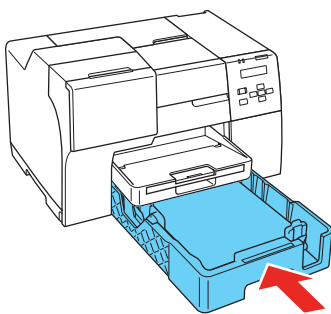


- 4 Squeeze the edge guides and slide them against the paper. Make sure the paper is stacked against the front edge guide.

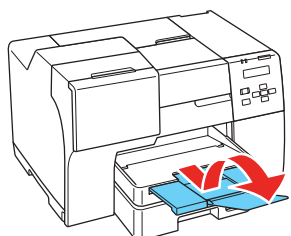


Note: Close the front cover of the legal-sized paper cassette.

- 5 Reinsert the cassette into the printer.

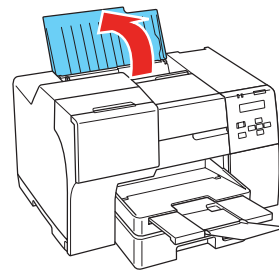


- 6 Slide out the output tray and flip up the extension.

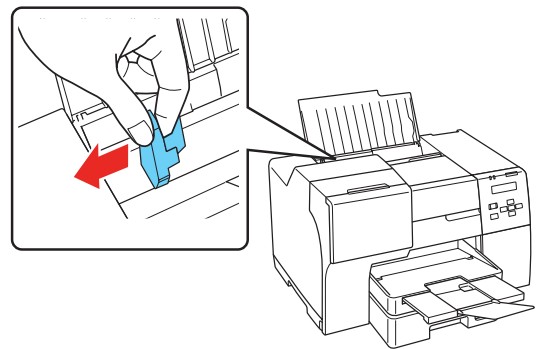


5 Load paper in the rear sheet feeder

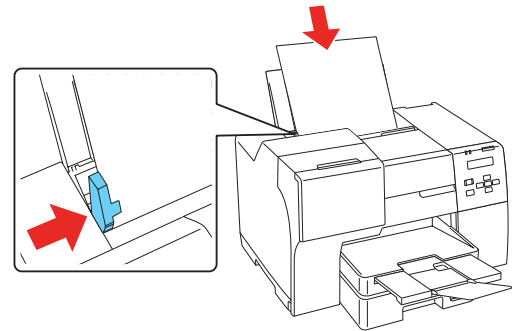
- 1 Open the paper support.



- 2 Slide the edge guide to the left.



- 3 Insert paper with the printable side up, against the right side of the feeder. Then slide the edge guide against the paper.



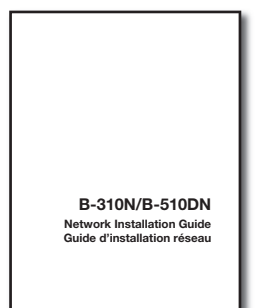
Note: You can load up to 150 sheets of plain, letter-size paper in the rear sheet feeder. Do not load paper above the arrow on the edge guide.

Using the optional legal-size paper support, you can load up to 60 sheets of plain, legal-size paper. See the back of this sheet for information on ordering the optional legal-size paper support.

6 Choose your connection

Network Connection

See the *Network Installation Guide* for instructions.



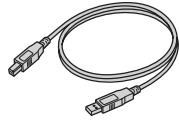
USB Connection

Make sure you have a USB cable (not included). Then follow the steps on the back of this sheet for Windows® or Macintosh®.

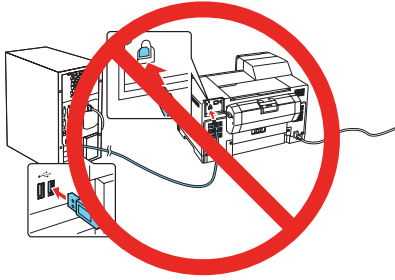
Windows USB connection

Your software works with Windows 2000, Server 2003, XP, XP Professional x64 Edition, Windows Vista® and Windows 7.

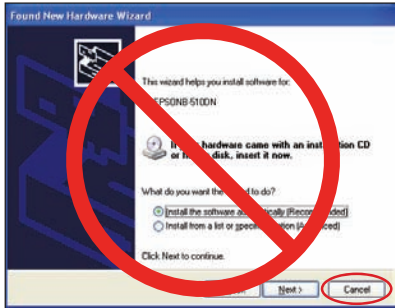
Make sure you have a USB cable (not included).



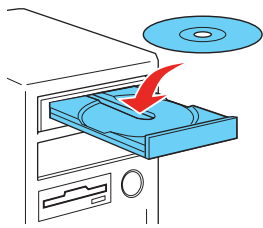
- 1 Make sure the printer is **NOT CONNECTED** to your computer.



Note: If you see a Found New Hardware screen, click **Cancel** and disconnect the USB cable.



- 2 Insert your printer CD.



With Windows 7 and Windows Vista, if you see the AutoPlay window, click **Run Setup.exe**. When you see the User Account Control screen, click **Continue**.

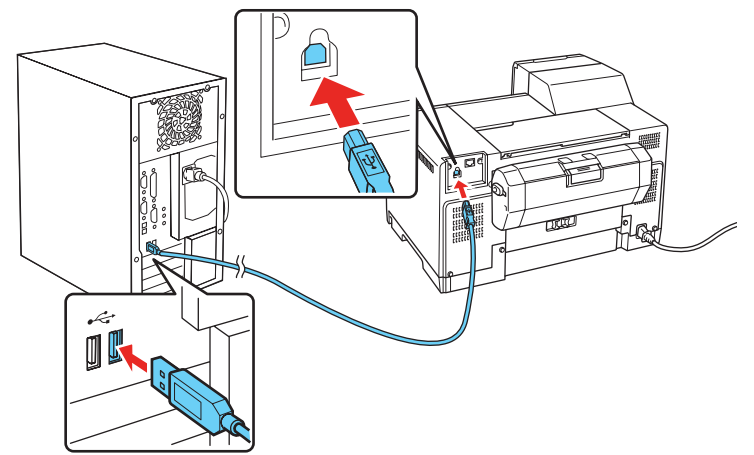
- 3 Click **Install**.



- 4 Click **Install driver for USB connection** and follow the on-screen instructions.



- 5 When prompted, connect the USB cable. Use any open port on your computer.



Note: If installation doesn't continue after a moment, make sure you securely connected and turned on the printer.

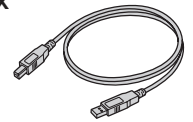
- 6 Follow the on-screen instructions to install the rest of the software and register your printer.
- 7 When you're done, remove the CD.

You're ready to print! See your on-screen *User's Guide* for instructions.

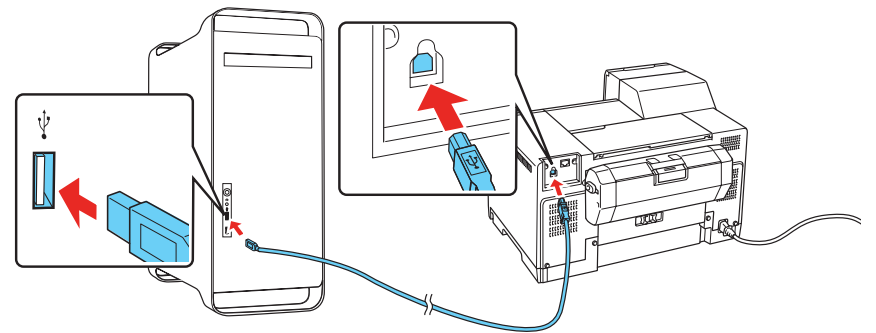
Macintosh USB Connection

Your software works with Mac OS® X 10.4.11, 10.5.x and 10.6.x.

Make sure you have a USB cable (not included).

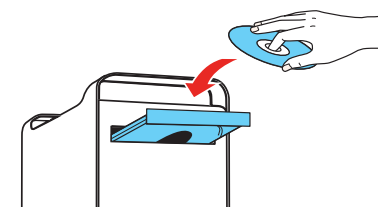


- 1 Connect the cable to the printer and to any open USB port on your Macintosh.



- 2 Turn on your Macintosh and your printer.

- 3 Insert your printer CD.



- 4 Double-click the  installer icon.

- 5 Click **Install**.



- 6 Click **Install driver for USB connection** and follow the on-screen instructions.



- 7 Continue following the on-screen instructions to install the software and manual and register your printer.

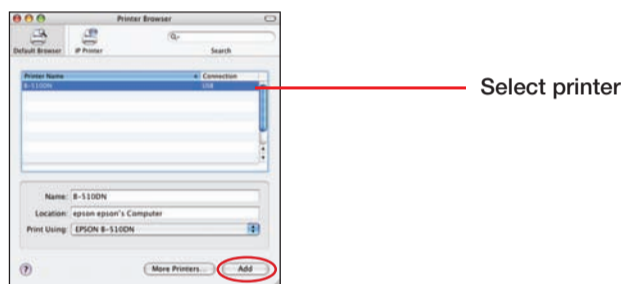
- 8 Click **Exit**, then remove the CD.

- 9 Do one of the following:

For Mac OS X 10.5 and 10.6, select **Print & Fax** from System Preferences. Click the **+** button, then select your printer and click **Add**.



For Mac OS X 10.4, open the Printer Setup Utility. Click **Add**. You see your printer in the Printer Browser:



Select your printer and wait while your Macintosh finds the driver and the **Add** button becomes available. Then click **Add**. You see your printer in the Printer List.

You're ready to print! See your on-screen *User's Guide* for instructions.

Need ink or accessories?

For the right supplies at the right time, you can purchase them at Epson Supplies CentralSM at www.epson.com/ink3 (U.S. sales) or www.epson.ca (Canadian sales). You can also purchase supplies from an Epson authorized reseller. To find the nearest one, call 800-GO-EPSON (800-463-7766).

The following supplies and accessories are available for your printer:

Item	Product Code
Extra High Capacity Ink Cartridge (Black) (B-510DN only)	T6181
High Capacity Ink Cartridge (Black) (B-510DN only)	T6171
High Capacity Ink Cartridge (Cyan) (B-510DN only)	T6172
High Capacity Ink Cartridge (Magenta) (B-510DN only)	T6173
High Capacity Ink Cartridge (Yellow) (B-510DN only)	T6174
Standard Capacity Ink Cartridge (Black)	T6161
Standard Capacity Ink Cartridge (Cyan)	T6162
Standard Capacity Ink Cartridge (Magenta)	T6163
Standard Capacity Ink Cartridge (Yellow)	T6164
Maintenance Box	T619000
Legal-size Paper Support	C12C815341
Duplex unit (B-310N only)	C12C802531
Legal-size Paper Cassette (B-310N only)	C12C817001

Any questions?

On-screen *User's Guide*

Click the **B-310N/B-510DN User's Guide** desktop icon for easy access to instructions on printing, maintaining your printer, and solving problems.

Network Installation Guide

Follow the instructions in this booklet to install the printer on a network (Windows and Macintosh).

On-screen help with your software

Select **Help** or **?** when you're using your software.

Epson Technical Support

Internet Support

Visit Epson's support website at www.epson.com/support and select your printer for solutions to common problems. You can download drivers and documentation, get FAQs and troubleshooting advice, or e-mail Epson with your questions.

Speak to a Support Representative

Call (562) 276-7202 (U.S.) or (905) 709-2567 (Canada), 6 AM to 6 PM, Pacific Time, Monday through Friday. Days and hours of support are subject to change without notice. Toll or long distance charges may apply.



Epson is a registered trademark, Epson Exceed Your Vision is a registered logomark, and Supplies Central is a service mark of Seiko Epson Corporation.

General Notice: All other trademarks are the property of their respective owners. Epson disclaims any and all rights in those marks.

This information is subject to change without notice.

© 2009 Epson America, Inc. 11/09

CPD-27738